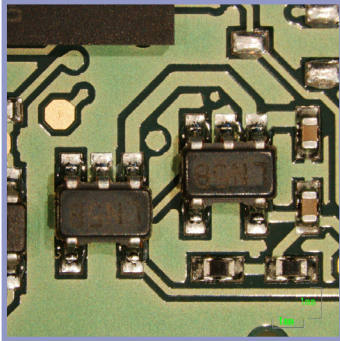




IPC PCB INSPECTION SERVICE

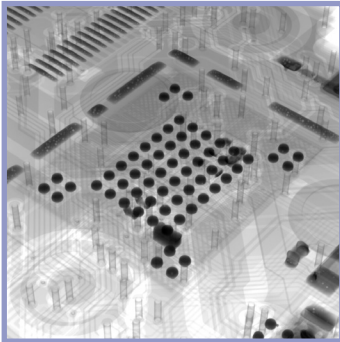
- IPC-A-600 BARE PCB INSPECTION
- IPC-A-610 ASSEMBLED PCB INSPECTION
- INSPECTION ACCORDING ALL IPC CLASSES
- MULTIPLE HIGH QUALITY INSPECTION TECHNIQUES
- INDEPENDENT QUALITY ASSESSMENT

IPC PCB INSPECTION SERVICE



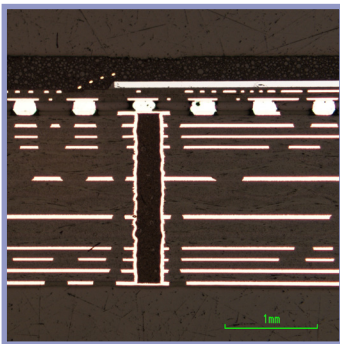
IPC-A-600 PCB / IPC-A-610 PCBA INSPECTION

- IPC-A-600 - Acceptability of Printed Circuit Boards is an inspection criterion, setting the level of acceptance criteria for each class of product
- IPC-A-610 - Acceptability of Electronic Assemblies is the most widely used standard published by the IPC Association
- It has an international reputation as the source for end product acceptance criteria for consumer and high reliability printed wiring assemblies



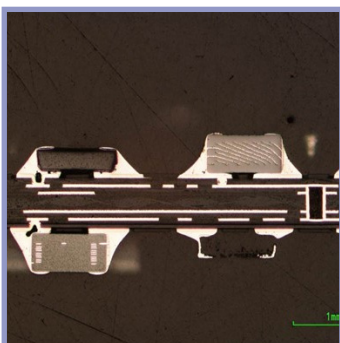
INSPECTION CLASSIFICATION

- Class 1 - General electronic products
- Class 2 - Dedicated service electronic products
- Class 3 - High performance / harsh environment electronic products



ANALYSIS TECHNIQUES

- Non-destructive
 - Optical inspection
 - X-ray inspection
- Destructive
 - Mechanical cross-sectioning
 - Optical / SEM inspection



SUMMARY

- Quality assessment of PCB design, manufacturing and assembly
- Analysis of the design, construction, materials, solder voids, cracks in the metallization, solder wetting, via filling, contamination, delamination and second source